

See discussions, stats, and author profiles for this publication at:
<https://www.researchgate.net/publication/258680952>

The Chiemgau Meteorite Impact Signature of the Stöttham Archaeological Site (SE Germany)

ARTICLE *in* MEDITERRANEAN ARCHAEOLOGY AND ARCHAEOLOGY · JANUARY 2012

Impact Factor: 0.23

READS

48

4 AUTHORS, INCLUDING:



Kord Ernstson

University of Wuerzburg

67 PUBLICATIONS 341 CITATIONS

SEE PROFILE



Ioannis Liritzis

University of the Aegean

138 PUBLICATIONS 877 CITATIONS

SEE PROFILE



Andreas Neumair

University of Salzburg

31 PUBLICATIONS 49 CITATIONS

SEE PROFILE



THE CHIEMGAU METEORITE IMPACT SIGNATURE OF THE STÖTTHAM ARCHAEOLOGICAL SITE (SOUTHEAST GERMANY)

K. Ernstson¹, C. Sideris², I. Liritzis³, A. Neumair⁴

¹ *Julius-Maximilians-Universität Würzburg, Am Judengarten 23, 97204 Höchberg, Germany*

² *Department of Geology, University of Athens, Panepistimiopolis Zografos, Greece*

³ *University of the Aegean, Dept. of Mediterranean Studies, Lab of Archaeometry,
1 Demokratias Str., Rhodes 54100, Greece*

⁴ *Institute for Interdisciplinary Studies, Bahnhofstrasse 1, 82205 Gilching, Germany*

Received: 7/8/2012

Accepted: 25/10/2012

Corresponding author: Kord Ernstson (kernstson@ernstson.de)

ABSTRACT

Archaeological excavation at Chieming-Stötttham in the Chiemgau region of Southeast Germany revealed a diamictic (breccia) layer sandwiched between a Neolithic and a Roman occupation layer. This exotic layer bears evidence of its deposition in a catastrophic event that is attributed to the Chiemgau meteorite impact. In the extended crater strewn field produced by the impact, geological excavations have uncovered comparable horizons with an anomalous geological inventory intermixed with archaeological material. Evidences of extreme destruction, temperatures and pressures including impact shock effects suggest that the current views on its being an undisturbed colluvial depositional sequence as postulated by archaeologists and pedologists/geomorphologists is untenable.

KEYWORDS: Bavaria, Chiemgau, Meteorite Impact, Bronze Age, Minerology.

1. INTRODUCTION

Natural catastrophes documented in the archaeological record have always played an important role of scientific interest and, at the same time, of much speculation. Floods (tsunamis), volcanic eruptions and earthquakes have influenced cultural changes, and a special case of natural disasters during Bronze Age civilisations was presented by Peiser *et al.* (1998). With regard to the Bronze Age events, for the first time meteorite impact hazards have got increased consideration (e.g., Ball *et al.*, 2007) so far without any real documentation in the archaeological stratigraphical record. This is different for the large Chiemgau meteorite impact event (Rappenglück and Ernstson; 2008, Ernstson and Rappenglück, 2008; Ernstson *et al.* 2010, 2011; Rappenglück *et al.* 2010, 2011; Hiltl *et al.* 2011; Liritzis *et al.* 2010; Shumilova *et al.* 2012; Isaenko *et al.* 2012) that happened some 4000-2500 B.P. and affected a probably densely populated region, although the magnitude of the cultural implications is still being discussed (Rappenglück *et al.*, 2006, 2009, 2012). Despite a clear evidence of an impact event opposition has formed by regional administrative bodies from geology (Bayerisches Landesamt für Umwelt, LfU; Doppler *et al.*, 2011) and archaeology (Bayerisches Landesamt für Denkmalpflege, BLfD; Völkel *et al.*, 2012). We examine here the case of the Stöttham archaeological site that was commented upon by Völkel *et al.* (2012).

2. THE CHIEMGAU IMPACT

The Chiemgau strewn field (Ernstson *et al.*, 2010) was dated to the Bronze Age/Celtic era based on archaeological finds (Ernstson *et al.* 2010). It comprises over 80 mostly rimmed craters scattered in a region of about 60 km x 30 km in the very South-East part of Germany (Lat Long Fig. 1). The diameters of individual craters range between a few metres and a few

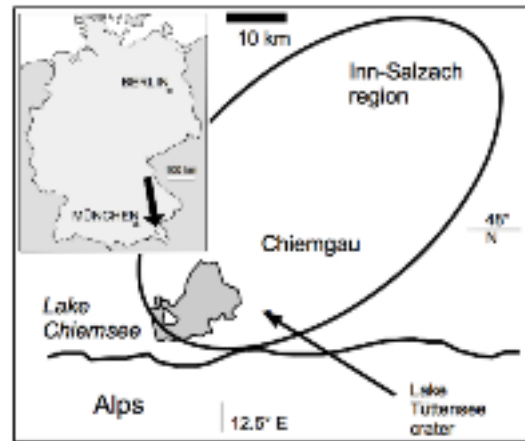


Figure 1. Location map for the Chiemgau region and the outline of the elliptically shaped strewn field of the Chiemgau impact event.

hundred metres, and these include the Lake Tüttensee crater the hitherto established largest crater of the strewn field exhibiting a rim-to-rim diameter of about 600 m and an extensive ejecta blanket. Geologically, the craters occur in moraine and fluvio-glacial sediments of Pleistocene age. The craters and surrounding areas are featuring heavy deformations of cobbles and boulders, abundant fused rock material (impact melt rocks and various glasses), evidence of shock-metamorphism, and geophysical anomalies (Ernstson *et al.*, 2010). The impact as the cause is substantiated by the abundance of metallic, glass and carbon spherules, accretionary lapilli, and finds of strange matter in the form of iron silicides like gupeite, xifengite and probably hapkeite, and various carbides like, e.g., moissanite SiC (Hiltl *et al.*, 2011). Impact-induced wide-spread earthquake-like shaking of the ground led to rock liquefaction processes the ramifications of which persist and irritate people until today (Ernstson *et al.*, 2011). It is suggested that the impactor was a 1,000 m diameter sized low-density disintegrated, loosely bound asteroid or a disintegrated comet. This is to account for the extensive strewn field (Ernstson *et al.*, 2010).

3. THE STÖTTHAM ARCHAEOLOGICAL SITE AND EXCAVATION

Earlier studies on the Chiemgau impact indicated that the disaster must radically have affected the local population. Geological and archaeological excavations (Ernstson, 2006 a, b) uncovered remnants of stone and pottery artefacts (e.g., Ernstson, T., 2007) together with fractured bones and teeth of domestic animals, and tufts of possibly human hair embedded in typical impact ejecta deposits.

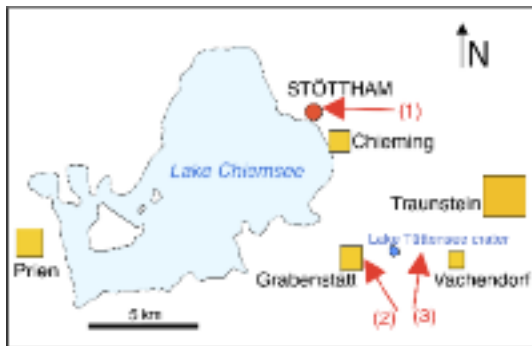


Figure 2. Location map for the Stöttham archaeological excavation (1) and the Grabenstätt (2) and Mühlbach (3) geologic excavations.

In the year 2007, on occasion of a routine archaeological excavation by an archaeological company in the course of house construction in the town of Chieming-Stöttham (Fig. 2) the Chiemgau Impact Research Team (CIRT) coincidentally attended the excavation and discovered a very conspicuous intercalated layer (Fig. 3). Rapidly, the anomalous character of this deposit that did not at all match the archaeological context (Fig. 4) was realized, and a thorough geoscientific investigation and documentation by scientists linked with the CIRT began.

Geologically, the conspicuous layer inferred to be an impact-related diamictic intercalation with intermixed artefacts of the Bronze Age, most probably of the Urnfield culture (ca. 1300-800 BC), as well as of the

Hallstatt culture (ca. 800-500 BC) (Fig.5). This was in a stratigraphical sequence that so far was seen to lie between Neolithic culture below and a Roman paving above (Fig. 3). This presented a unique situation of a layer formed by a catastrophic impact, that was sandwiched between dated archaeological horizons. Typical archaeological objects, fractured bones and teeth uncovered from the various horizons are shown in Fig. 6.



Figure 3. Part of the Stöttham excavation with the sandwiched impact layer. The geologic/archaeological stratigraphy. a: moraine, b: lower colluvium/lower occupation layer, c: diamictite/catastrophic layer, d: upper colluvium/upper occupation layer with Roman paving, e: soil. Image taken from Neumair et. al. (2010).



Figure 4. Detail of the diamictic texture of the impact layer.



Fig. 5. Intermixed in the impact layer: a Hallstatt shard. Millimetre scale.



Fig. 6. Archaeological objects (bronze burins, quartzite hammerstone) and fragments of bones, a tooth and pottery from the Stötttham exposure.

In 2008, at the behest of the Bavarian State Office for Monument Preservation (Bayerisches Landesamt für Denkmalpflege, BLfD), the archaeological excavation at Stötttham was accompanied by an investigation performed by *Wissenschaftszentrum Weihenstephan für Ernährung, Landnutzung und Umwelt der Technischen Universität München* [Science Center of Nutrition, Land Use and Environment, Technical University of Munich, at Weihenstephan] led by J. Völkel. Völkel *et al.* (2012) describe the Stötttham exposure from the pure standpoint of a geomorphologist/

pedologist seeing the deposit as a continuous, nearly undisturbed post-glacial colluvial infill into a channel. This was a contrast to the prevailing understanding and ignored the existing evidence of an impact.

4. EVIDENCE FOR THE METEORITE IMPACT DEPOSITION OF THE STÖTTTHAM CATASTROPHIC LAYER

The investigations of geology, petrography and impact research on the anomalous catastrophic layer indicated it to comprise rounded, subrounded, heavily shattered and extremely corroded cobbles (Fig. 7) in a clayey-silty, slightly sandy matrix intermixed with splintered wood, charcoal, fractured bones and teeth, and archaeological objects, among them a number of shards. The contrast of this peculiar geologic horizon to the colluvial layers below and above is remarkable (see Figs. 3, 4). High-temperature signature that was reached consequent to impact is given by partly melted silica limestone cobbles, a typical rock from the Alps (Fig. 8), and a sandstone clast with sporadically interspersed glass (Fig. 9). A formation of the melt from impact shock release is possible. Particles of a dirty brown glass (possibly molten soil) contribute to the diamictitic layer. Some minerals, e.g. amphiboles, show a loss of water and indication of possible shock melting. Bronze mica from heat decomposition, beginning at about 500°C, is frequently observed. Evidence of heat disintegration of limestone pebbles by decarbonisation and/or partial melting is abundant. These pebbles show shells of white calcareous powder or, under slight compression, completely disintegrate into white powder, which gives a typical white-spotted appearance to the diamictite as seen in Figs. 3, 4. Substantive chemical or physical corrosion of carbonate pebbles,



Figure . 7. Typical cobbles uncovered from the diamictic impact layer. Left: strong corrosion of carbonate and silicate rocks by heat and/or post-impact nitric-acid precipitation. Right: extremely disintegrated gneiss cobble with bronze mica from strong heating and a heavily fractured sandstone with well preserved coherence proving high confining pressure upon embedding in the diamictite.



Figure 8. From the Stötttham impact layer: sawed surface of a silica limestone exposed to strong heating. Only a core has retained its original texture. In the outer zone the carbonate has disappeared by decarbonisation and/or melting.



Figure 9. Stötttham diamictite: photomicrograph of a sandstone sample containing glass from probable shock melt – black under crossed polarisers of the microscope. Field width 1.6 mm.

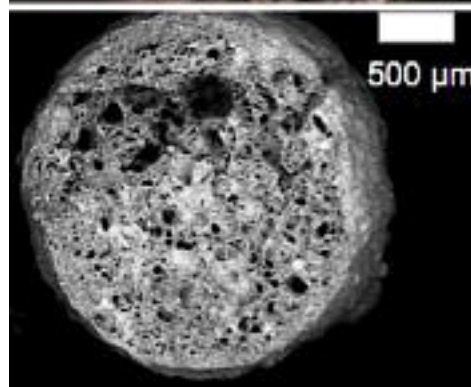
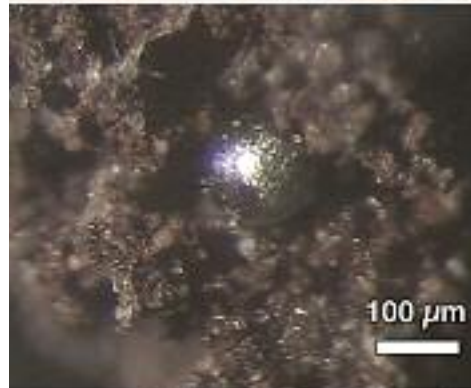


Figure 10. Spherules from the Stötttham impact layer (top down): strongly magnetic carbonaceous spherules, a metallic spherule embedded in slaggy glass, and SEM image of a vesicular glass spherule.

frequently leading to distinct skeleton sculptures, is also abundant (Fig. 7). Silicate pebbles may likewise show significant corrosion. Elutriation of the diamictite matrix revealed carbonaceous, glassy and metallic spherules (Fig. 10) that, because an industrial origin can be excluded, are evidence of an extraterrestrial impact event (Szöör et al., 2001; Dressler and Reimold, 2002; Firestone, 2009).

Microscopic evidence - shock metamorphism

Under the polarising microscope, shock metamorphism in rocks from the Stöttham catastrophic layer was seen. In nature, this is exclusively ascribed to hypervelocity meteorite impact (e.g., Grieve *et al.* 1996, French 1998) leading to extreme pressures

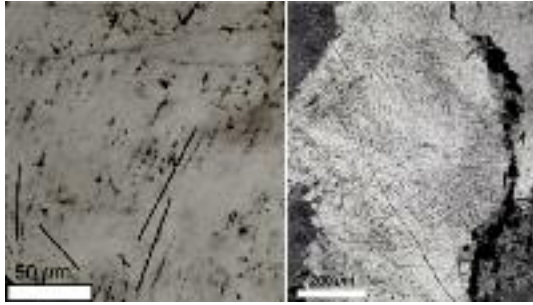


Figure 11. Shock effect: multiple sets of planar deformation features (PDFs) in quartz from two sandstone cobbles. Left: four sets (indicated by lines) of decorated PDFs of moderate signature. Photomicrograph, crossed polarisers. Right: The seemingly curved PDFs are in fact two sets crossing under acute angle.

An additional slight bending is attributed to a plastic deformation of the quartz lattice as seen from the undulatory extinction. Polarisers slightly rotated from the crossed position. Scale bar 200 µm.

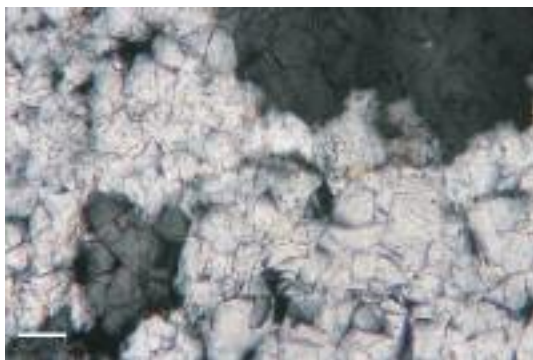


Figure 12. Peculiar fracture pattern in quartz from a characterising cobble in the Stöttham impact layer with sets of planar fractures and isotropic spots (dark to black) characterizing the grain as a diaplectic quartz. Diaplectic means that the impact shock destroyed the crystal lattice to produce co-called diaplectic glass. In contrast to melt glass, the formation of diaplectic glass typically lets the fracture structures intact. Photomicrograph, crossed polarisers; field width 1.1 mm.

and temperatures. In sandstones, we observed rock melt (Fig. 9) and multiple sets of planar deformation features (PDFs) in quartz (Stöffler and Langenhorst, 1994) (Fig. 11). In a quartzite cobble diaplectic quartz crystals were seen requiring shock pressure of at least 10 GPa (e.g., Engelhardt *et al.*, 1969) (Fig. 12). PDFs and diaplectic quartz are a clear manifestation of strong crystal lattice distortion by shock pressure, that on release can raise the temperature to melt rock material.

5. THE STÖTTHAM ARCHAEOLOGICAL EXPOSURE IN THE CONTEXT OF OTHER CHIEMGAU IMPACT DEPOSITS

Although the Stöttham archaeological site proves to be unique with regard to the clear stratigraphy of an impact layer intercalated between two dated cultural periods, it must be seen in the much larger context of the far-reaching Chiemgau impact event. From more than 60 geological excavations that focussed on the environs of the Lake Tüttensee crater, it became evident that the Stöttham catastrophic layer with the intriguing impact features has many counterparts in a much larger area. Details of these excavations have been reported elsewhere (e.g., Ernstson *et al.*, 2010,

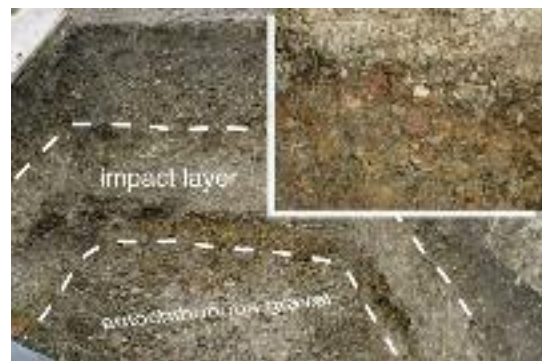


Figure 13. The Grabenstätt excavation (depth about 1.5 m) of the impact layer. Inserted a close-up of the diamictite largely conforming to the Stöttham layer.



Figure 14. Multicoloured breccia from the Mühlbach impact layer.

Rappenglück et al., 2010), and here we focus on a few attributes that can be compared with the Stöttham findings. The impact layer that has been encountered at a depth between 1-2 metre around Lake Tüttensee can be tracked up to the town of Grabenstädt and roughly 1 km in the opposite direction. There the Grabenstädt and Mühlbach geologic excavations are located, which is about 10 km to the south of Stöttham (Fig. 2). The impact layer at both exposures shows the same diamictic composition of heavily fractured and unfractured, in part extremely corroded cobbles and boulders in a predominantly loamy and clayey matrix (Fig. 13), and some stratification as a probable result of reworking.

Intermixed are abundant splinters of wood, charcoal, fractured bones and teeth altogether making a real multicoloured breccia (Fig. 14).

Like in Stöttham, evidence of extreme temperatures and pressures including shock-metamorphic effects is observed. Figs. 15-17 provide typical example of changes in the rock and mineral changes due to shock analogous to Stöttham. As seen in Fig. 15, a silica limestone ("Kieselkalk") cobble completely lost its original texture to become the aspect of a vesicular melt rock. The very high temperature experienced by the cobble is indicated by the formation of the mineral pseudowollastonite (Fig. 16), a high-



Figure 15. A silica limestone cobble from the Mühlbach excavation that has undergone very strong heating.

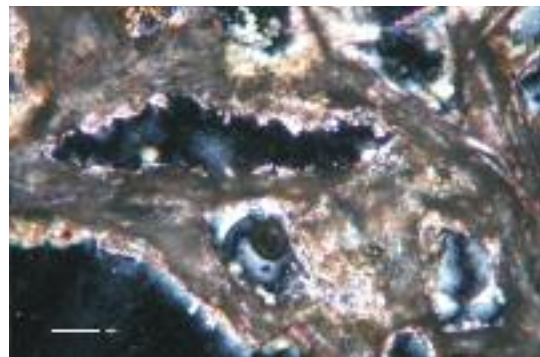


Figure 16. Fibrous calcite and pseudowollastonite surrounding a cavity; photomicrograph, crossed polarisers; from the strongly heated silica limestone in Fig. 15. Field width 550 μm .

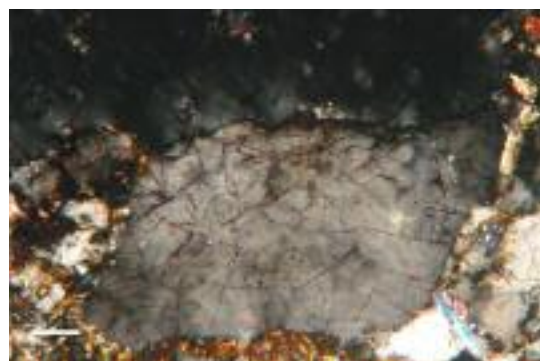


Figure 17. Sets of planar fractures (PFs) and beginning isotropisation (diaplectic quartz) as indication of shock overprint of a quartzite cobble from the Grabenstädt location. Field width 1.1 mm.

temperature modification of the common wollastonite CaSiO_3 , that is artificially produced and is rare in a natural environment. To our knowledge, pseudowollastonite has never before been described for an impact rock. Multiple sets of planar fractures (PFs) and the small spots of diaplectic glass in the quartz grain from

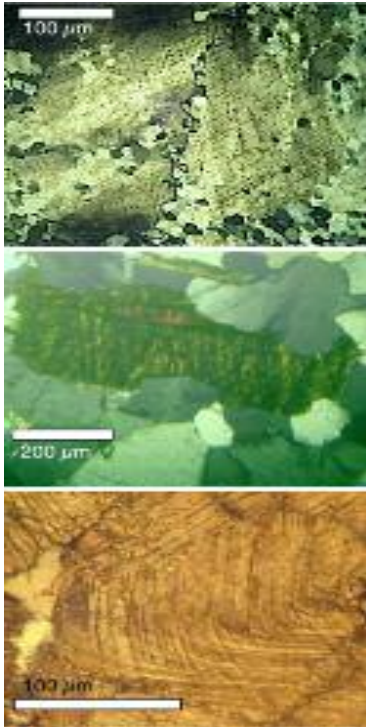


Figure 18. Typical shock effects as identified in rocks from the Lake Tüttensee impact layer. Top down: Planar deformation features (PDFs) in two quartz grains; two crossing sets of kink bands in mica; multiple sets of plastically deformed microtwins in calcite.

Fig. 17 remind of the quartzite cobble from Stöttham (Fig. 12). Also PFs are considered a typical shock effect although in rare cases they may originate from very strong tectonic overprint. Here, tectonics can be excluded because the PFs occur in the outer zone of the affected cobble only. Analogous to the Stöttham quartzite cobble, small spots of diaplectic glass are additional confirmation of a shock event.

As has already been noted earlier (Ernstson *et al.*, 2010) the abundance of shock



Figure 19. A Stone Age/Bronze Age drilled quartzite boulder recovered from the Mühlbach impact layer. Image from Ernstson, T. (2007)

deformation in the Lake Tüttensee rocks is striking and has been ascribed to a process of probable shock focus in the hard cobbles and boulders embedded in a soft matrix. Characteristic examples of these deformations in various minerals are shown in Fig. 18.

Unlike Stöttham, the layers below and above the catastrophic horizon around Lake Tüttensee do not give any clear age, but do have intermixed artefacts (Stone Age and Bronze Age shards and stone tools, Fig. 19) to set a lower limit to the deposition of the diamictic layer *i.e.* the impact event. In particular, the bulk of the ceramics from Bronze Age, most probably Urnfield culture, found in both the Stöttham und Lake Tüttensee catastrophic layers, suggest a close archaeological linkage.

6. CONCLUSIONS

The Stöttham archaeological site and excavation enable two conclusions. The first is the perception that evidently for the first time the occurrence of a large meteorite impact event has been documented within a dateable archaeological stratigraphy and that advanced impact research together with physical dating (Liritzis *et al.*, 2010) has strikingly entered the field of archaeometry. The close similarity to exposures in a much larger area demonstrates that the Stöttham case has a

far reaching relevance for the archaeological time span (Bronze Age/Celtic era) and the affected region under consideration. At the same time we observe a strict refusal of this coherence exemplified by the study of Völkel et al. (2012) that was initiated by the BLfD. Unfortunately, the BLfD did not consider to protect the Stöttham unique exposure now destroyed.

It appears that the combined geologic and archaeological stratigraphy provides a clear indication of the Stöttham layer to be of impact origin contrasting with the viewpoint of geomorphology and soil science (Völkel et al., 2012). We specifically want to point out that Völkel et al. have investigated exclusively the Stöttham outcrop measuring 300 m² at best, while any integration into an extended context is lacking. Thus their extrapolation to a larger

spatial scale becomes untenable, and point data from this individual location without a contextual framework may be misleading. The unambiguous presence of a diamictite in addition to the existence of extreme destruction, extreme temperatures and extreme pressures implying clear shock effects undoubtedly suggest that the Stöttham diamictite is an impact-related layer that formed due to a meteorite impact during the Bronze Age/Celtic era.

ACKNOWLEDGEMENTS

We thank A. Dufter, T. Ernstson, R. Leitermann, H.-P. Matheisl, W. Mayer, E. Neugebauer, B. Rappenglück, H. Steiner and D. Sudhaus for manifold support, and we greatly appreciate the constructive reviews of Prof. A.K. Singhvi and Prof. V. Perdikatsis.

REFERENCES

- Ball, A., Kelley, S., Peiser, B.J. (2007) *Near-earth objects and the impact hazard: topic 2*. Open University Worldwide.
- Doppler, G., Geiss, E., Kroemer, E., Traidl, R. (2011) Response to 'The fall of Phaethon: a Greco-Roman geomyth preserves the memory of a meteorite impact in Bavaria(south-east Germany)' by Rappenglück et al. (*Antiquity* 84). *Antiquity*, 85, 274-277.
- Dressler, B.O., Reimold, W.U., (2001) Terrestrial impact melt rocks and glasses. *Earth-Science Reviews* 56, 205-284.
- Engelhardt, W. von, Stöffler, D., Schneider, W. (1969) Petrological investigations within the Ries crater. (in German). *Geologica Bavarica*, 61, 229-295.
- Ernstson, K. (2006 a) The meteorite origin for the Lake Tüttensee crater strengthened: An impact layer in excavation pits at Mühlbach. (in German). http://chiemgauimpakt.de/Tuettensee_ges.pdf.
- Ernstson, K. (2006 b) Shock effects (shock metamorphism) in rocks from the impact layer at Lake Tüttensee (ejecta, multi-colored breccia). (in German). <http://www.chiemgau-impakt.de/bdw3.pdf>.
- Ernstson, K. and Rappenglück, M.A. (2008) The Chiemgau crater strewn field: Evidence of a Holocene large impact event in Southeast Bavaria, Germany. International Scientific Conference "100 years of the Tunguska event". June 30-July 6, 2008, Krasnoyarsk (Russia).
- Ernstson, K., Mayer, W., Neumair, A., Rappenglück, B., Rappenglück, M.A., Sudhaus, D., Zeller, K.W. (2010) The Chiemgau Crater Strewn Field: Evidence of a Holocene large impact event in Southeast Bavaria, Germany. *Journal of Siberian Federal University. Engineering & Technologies* 1, 72-103.

- Ernstson, K., Mayer W., Neumair, A., and Sudhaus, D. (2011). The sinkhole enigma in the alpine foreland, Southeast Germany: Evidence of impact-induced rock liquefaction processes. - *Cent. Eur. J. Geosci.*, 3(4), 385-397.
- Ernstson, T. (2007): A peculiar prehistoric artifact in the Tüttensee impact ejecta ("Bunte Breccia"; Chiemgau Holocene impact event). <http://bandkeramik.eu/>.
- Firestone, R.B. (2009) The Case for the Younger Dryas Extraterrestrial Impact Event: Mammoth, Megafauna, and Clovis Extinction, 12,900 Years Ago. *Journal of Cosmology*, 2, 256-285.
- Grieve, R.A.F., Langenhorst, F., Stöffler, D. (1996) Shock metamorphism of quartz in nature and experiment: II. Significance in geoscience. *Meteoritics Planet. Sci.* 31, 6-35.
- Hiltl, M., Bauer, F., Ernstson, K., Mayer, W., Neumair, A., Rappenglück, M.A. (2011). SEM and TEM analyses of minerals xifengite, gupeiite, Fe₂Si (hapkeite?), titanium carbide (TiC) and cubic moissanite (SiC) from the subsoil in the alpine foreland: are they cosmochemical? *42nd Lunar and Planetary Science Conference (2011)*, 1391.pdf.
- Isaenko, S., Shumilova, T., Ernstson, K., Shevchuk, S., Neumair, A., Rappenglück, M.A. (2012) Carbynes and DLC in naturally occurring carbon matter from the Alpine Foreland, South-East Germany: Evidence of a probable new impactite. *Eur. Min. Conf.*, Vol 1, EMC2012-217.
- Liritzis, I., Zacharias, N., Polymeris, G.S., Kitis, G., Ernstson, K., Sudhaus, D., Neumair, A., Mayer, W., Rappenglück, M.A., Rappenglück, B. (2010) The Chiemgau meteorite impact and tsunami event (Southeast Germany): first OSL dating. *Mediterranean Archaeology and Archaeometry*, Vol. 10, No. 4, 17-33.
- Neumair, A., Ernstson, K., Mayer, W., Rappenglück, B., Rappenglück, M.A., Sudhaus, D. (2010) Characteristics of a Holocene impact layer in an archaeological site in SE-Bavaria, http://impact-structures.com/news/Stoettham_c.pdf (accessed 26/06/2010).
- Peiser, B. J., Palmer, T., Bailey, M.E., eds. (1998) Natural catastrophes during Bronze Age civilisations: archaeological, geological, astronomical and cultural perspectives. Hadrian Books, Archaeopress, Oxford.
- Rappenglück, M.A. and Ernstson, K. (2008). The Chiemgau crater strewn field (Southeast Bavaria, Germany): Evidence of a Holocene large impact event. International Conference "100 years since Tunguska phenomenon: Past, present and future". June 26–28, 2008, Moscow (Russia).
- Rappenglück, B., Rappenglück, M.A. (2006) Does the myth of Phaethon reflect an impact? Revising the fall of Phaethon and considering a possible relation to the Chiemgau Impact. *Mediterranean Archaeology & Archaeometry*, Special Issue 6, 101-109.
- Rappenglück, B., Ernstson, K., Mayer, W., Neumair, A., Rappenglück, M.A., Sudhaus D., Zeller, K.W. (2009) The Chiemgau impact: An extraordinary case study for the question of Holocene meteorite impacts and their cultural implications. *Cosmology Across Cultures ASP, Conference Series 409*, 338-343.
- Rappenglück, B., Rappenglück, M.A., Ernstson, K., Mayer, W., Neumair, A., Sudhaus D., Liritzis, I. (2010) The fall of Phaethon: a Greco-Roman geomyth preserves the memory of a meteorite impact event in Bavaria (Southeast Germany), *Antiquity* 84, 428-439.
- Rappenglück, B., Rappenglück, M.A., Ernstson, K., Mayer, W., Neumair, A., Sudhaus D., Liritzis, I. (2011) Reply to Doppler et al. 'Response to "The fall of Phaethon: a Greco-Roman geomyth preserves the memory of a meteorite impact in Bavaria

- (south-east Germany) (Antiquity 84)''', *Antiquity*, 85, 278-280.
- Rappenglück, B., Ernstson, K., Liritzis, I., Mayer, W., Neumair, A., Rappenglück, M.A., Sudhaus, D. (2012). A prehistoric meteorite impact in Southeast Bavaria (Germany): tracing its cultural implications. *34th International Geological Congress*, 5-10 August, Brisbane.
- Shumilova T. G., Isaenko S. I., Makeev B. A., Ernstson K., Neumair A., Rappenglück M. A. (2012). Enigmatic Poorly Structured Carbon Substances from the Alpine Foreland, Southeast Germany: Evidence of a Cosmic Relation. *43rd Lunar and Planetary Science Conference* (2012), 1430.pdf.
- Stöffler, D. and Langenhorst, F. (1994). Shock metamorphism of quartz in nature and experiment: I. Basic observation and theory. *Meteoritics*, 29, 155-181.
- Szöör, G., Elekes, Z., Rózsa, P., Uzony, I., Simulák, J., Kiss Á.Z. (2001). Magnetic spherules: Cosmic dust or markers of a meteoritic impact? *Meteoritics & Planetary Science* 39, 169-197.
- Völkel, J., Murray, A., Leopold, M., Hürkamp, K. (2012). Colluvial filling of a glacial bypass channel near the Chiemsee (Stöttham) and its function as geoarchive. *Zeitschrift für Geomorphologie (Annals of Geomorphology)*, 56(3), 371-386, 2012.